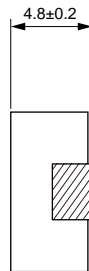


## Molding Power Inductors Size 1050

U) - k U	0.22	±20%
U) - k U	1.00	±20%
U) - k U	1.50	±20%
U) - k U	2.20	±20%
U) - k U	3.30	±20%
U) - k U	4.70	±20%
U) - k U	5.60	±20%
U) - k U	6.80	±20%
U) - U	10.0	±20%
U) - U	15.0	±20%
U) - U	22.0	±20%
U) - U	33.0	±20%
U) - U	47.0	±20%
U) - U	100	±20%

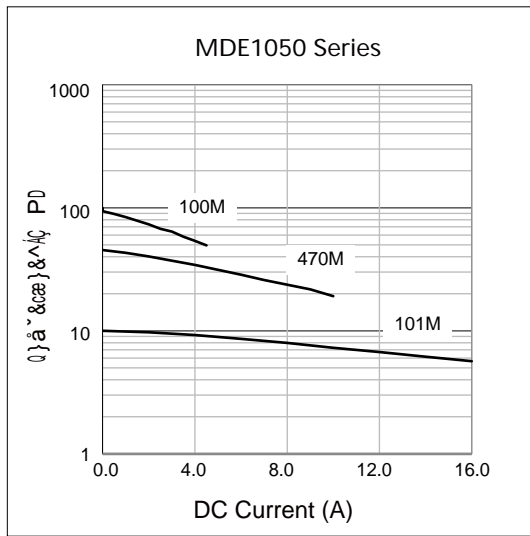
Saturation Current will cause L to drop approximately 20%  
 Temperature Rise Current: The actual value of D



Electrical Properties:

## Typical Electrical Characteristics:

### Inductance vs DC Current Characteristics:



### Temperature Rise vs DC Current Characteristics:

